

Initial Teacher Training (ITT)



Shropshire Primary Partnership

Our Associate Teachers have made a brilliant start to their teaching journey. Just one week in, they had covered a lot. They had completed their inductions with their Lead School Partners and the University of Chester, participated in Professional Development (P.D.) days in their schools, and worked directly with children in classrooms.

The first week concluded with a Professional Development Day focused on safeguarding and classroom management, providing an excellent learning opportunity and time for reflection.

Feedback from some of the ATs:

"Today's been so helpful to give clarity about what the year entails but also a deep dive into positive classroom management. Great to hear reflections from other associate teachers on their placements and feel a sense that we are not alone. We're excited to put all we've learned into practice." – Emma & Natalie.

"Today's session was wonderful. It has deepened my understanding of the year ahead and excited me to use what I have learned today in my practice in teaching. The training was very insightful and has left me feeling much more prepared to step into the classroom." – Jessie.



Severn

Training & Schools Alliance

Severn Training and Schools Alliance

The PGCE course with QTS is demanding, highlighting the importance of ATs supporting one another and building strong relationships. All our ATs participate in a day at Arthog Outreach to understand the benefits of learning beyond the classroom.



This is what our ATs said:

"I only have a few photos from Arthog! I was too busy living in the moment to remember to take any!

"It was an amazing time to go out, especially as my first experience of this sort of thing - I can see why children are so excited going on these adventures!" – Cerys

"I really enjoyed Arthog! I didn't think I would, but I loved the canoeing and the fire starting. It was really fun and both things I haven't done before! I can see why children love it so much and how beneficial it is for them, as well as giving them the chance to have new experiences and make special memories! The course is really intense, sometimes more than



others, but I'm loving every minute, and I've learnt so much already!"
- Sarah-Jane

The Intensive Training and Practice weeks, new this year, have immersed our ATs in crucial topics like 'Routines and Instructions' and 'Teacher Modelling'. Both of these elements are crucial to be an effective and outstanding classroom teacher. These weeks involve understanding pedagogical approaches, planning, rehearsing, and practicing in schools, culminating in a review session at the end of the week.

"I am aware that the ITAPs are a new addition to the course, and I wanted to take a moment to write to you after another positive experience with ITAP 2.

I'd like to thank you for the opportunity to participate in both ITAP 1 and ITAP 2. These experiences have been incredibly valuable in shaping my teaching, as well as providing a great opportunity to explore different school environments as I begin to consider what type of school I see myself working in. The feedback and insights I've gained, particularly from my time at Redhill Primary School, have really helped me to focus on areas of my teaching that I am eager to develop further.

My time with Year 2 at Redhill Primary School has been fantastic! The support I have received from the staff there has been outstanding. It has been a truly supportive and inspiring environment, and I've thoroughly enjoyed both observing modelling in action and putting everything I've learned from centre-based learning into practice. I look forward to continuing to refine my practice and growing in confidence moving forward.

I've been so grateful to be part of the Redhill community, even for just 1.5 days, and I have learned so much from both the staff and the children. It has been a great match for me! Overall, it's been a fantastic experience". Toyah

This is what the amazing schools who supported the ITAP weeks said:

"We have had a wonderful couple of days. The ATs are amazing! They have all observed experts modelling and explaining. They have all had the opportunity to model themselves. I was pleased with the way they were all verbalising their own thoughts as they modelled the process. I think this is a great ITAP and could be extended going

forward. Modelling in maths is quite different to modelling in literacy so having the opportunity to see and have a go at both would be valuable.” Kath Redhill Primary School.

“Both Katie and Jamie were very professional and enthusiastic to learn, asking questions to determine their understanding. Even on their first day, they made every opportunity to get to know the children. They were happy to take time to go through the planning and create their own planning for specific children. They discussed with me modelling techniques that they have used on placement and have suggested that they would use some that they had seen. It was a pleasure to have them in my class and I hope that by experiencing ITAP week has been helpful to them”. Alison Hollinswood Primary School



Alliance of Leading Learning

Our current cohort have had a fantastic start to their PGCE course!

Feedback about the ITaP weeks have been positive, the ATs enjoyed the opportunity to gain experience in a different school and focus intensively on one aspect, and that this improved their practice back on placement. This was evident in SBTEM feedback on Abyasa too, with SBTEMS clearly noting developments.



Early Career Framework and Appropriate Body News (ECF & AB)

Class of July 2024 - Congratulations!

Our second cohort of 119 ECTs successfully completed ECF induction with STEP Appropriate Body in the summer term along with a large number of Early Career Mentors finalising their training programmes too. We are very proud to celebrate their achievements here and wish them every success for the future.

Individual graduations continue to occur for late starters as we progress through the new academic year, which is always a joy, so congratulations to all!

Registration Success

We held several registration guidance events to aid Induction Tutors and Head Teachers in navigating registration processes. Thanks to everyone's efforts, many ECTs registered with us by the October deadline.

Appropriate Body Welcome

We welcomed many ECF partners at our event on 2nd October 2024. Highlights included speeches from Alison Pope, Headteacher at the Priory School, Samantha Morris, Associate Assistant Principal at Ercall Wood Academy, and Kelly McKay, ECF Director, Best Practice Network. If you missed it, access the recording on our website: [Shropshire and Telford Education Partnership - ECF/ABCTs and ECMs](#) are actively engaging in free CPD and networking opportunities.



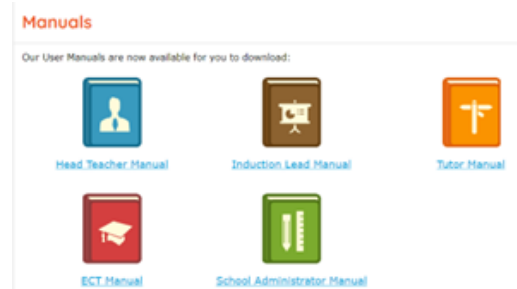
Drop-ins

Our first ECT Drop-in event on 13th November was a success, allowing ECTs to share experiences and ask questions. A similar meeting for Early Career Mentors and Induction Tutors was held on 14th November.

Future sessions are scheduled for **5th and 6th March** for ECTs and ECMs / ITs respectively. Contact us with questions or updates via ECF@stepwm2.co.uk.

ECT Manager

Positive feedback on our new ECT Manager system has been encouraging. It simplifies the ECT induction process, and helpful guides are available for all users. For assistance, use the red 'Help and Support' button, or contact our team.



NPQ News

Great News for Enrolments!

We're thrilled to announce that we have supported 118 new participants successfully enrolled onto funded NPQ programmes starting in October 2024.

Why Consider NPQs?

- Enhance your leadership skills and significantly impact your school's success.
- [Latest DfE CFE Research](#) shows that (88%) of participants report they feel confidence to implement changes in their setting following their NPQs and that over half have moved into a new role or taken on new responsibilities.

Important Dates:

Provider Application window is now open – watch out for news from us on DfE Funding for the April 2025 cohort.

Exciting New Programmes:

- The new NPQSENco and NPQLPM have just launched.
- Talk to us about a [Whole School / Trust approach to CPD](#) igniting significant changes through NPQs. Investing in quality professional learning – NPQs are designed to empower leaders and improve educational outcomes.



STEP are Delighted to Support The MTPT Project!

STEP have teamed up with The MTPT Project, to support our staff members in their return to work following maternity or paternity leave.

There are some upcoming fully funded workshops available to share with colleagues that would be interested to make their return to work an easier time:

- **Winter Parental Leave group coaching programme** - begins on Thursday 12th December - for teachers, leaders and support staff currently on a period of adoption, maternity or shared parental leave

<https://www.eventbrite.co.uk/cc/mtpt-return-to-work-workshops-3435429>

- **December Return to Work workshop** - Tuesday 10th December - for teachers, leaders and support staff returning to work after a period of maternity, adoption or shared parental leave in December, January or February

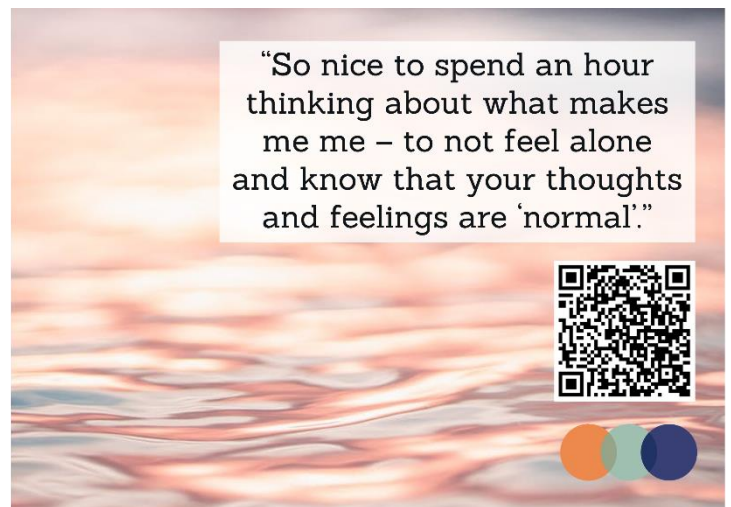
<https://www.eventbrite.co.uk/cc/mtpt-parental-leave-group-coaching-cohorts-3435509>



Return to Work Workshops

For teachers, leaders and support staff returning from maternity, adoption or shared parental leave

Fully-funded for state school colleagues.
Workshops running throughout the academic year.



Parental Leave Group Coaching

For teachers, leaders and support staff currently on maternity, adoption or shared parental leave

Fully-funded for state school colleagues.
Cohorts running throughout the academic year.



Dates for your diary

ITT

STSA Information Sessions

Every Tuesday

5.30 - 6.30pm Click below for how to book a place

[Information Sessions – Severn Training and Schools Alliance \(stsa.uk\)](#)

SPP Info Sessions

Every Wednesday 5 - 6pm

Click below for how to book

[Information Sessions - Shropshire Primary Partnership](#)

STP Information Sessions

Every Tuesday 4 - 5pm

Click the below link to book:

[Information Session Registration Form](#)

ECT/AB

Welcome Events - AB/ECF

29th January 2025 / 30th January 2025

Drop in Sessions for ECTs & ECMs

5th March 2025 / 6th March 2025

NPQ

Application window is now open for April 2025 programmes

Apply now!

LNPQ


Application window is now open for April 2025 programmes

Apply now!

Contact us



Shropshire and Telford
Education Partnership

 info@stepwm2.co.uk

 01743 598200

 www.stepwm2.co.uk

What do you want to hear about in our next STEP
newsletter?

If you would like to put suggestions forward, please email Lucy Copson
below...

[Click here](#)

